



# MONTHLY MEMBERSHIP PROGRESS REPORT

District 324B2

Results as of: 06/30/2019

GMT: N S SANKAR

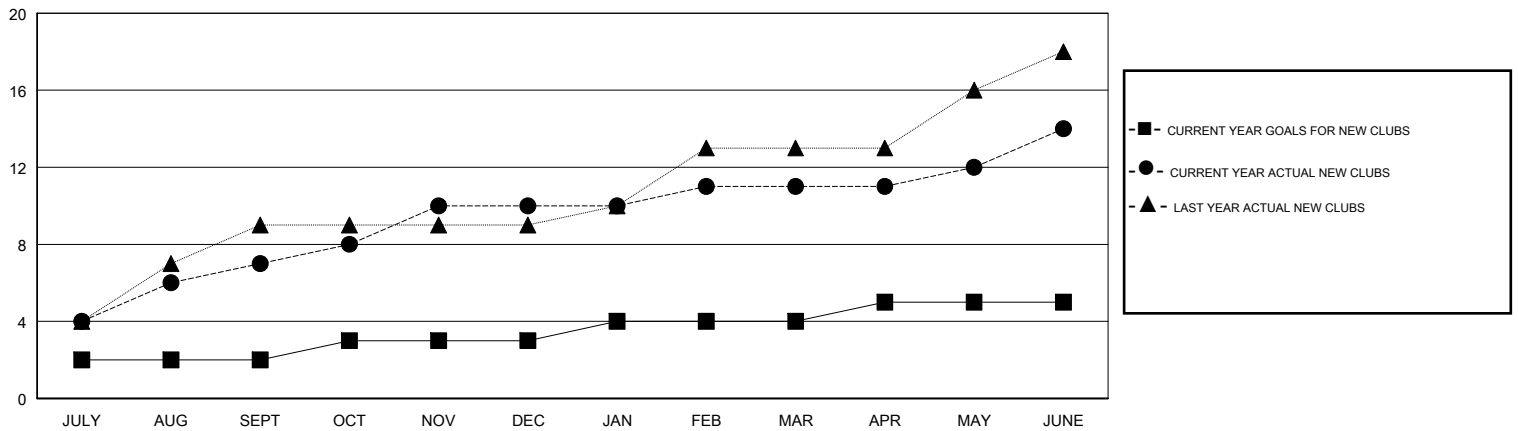
LOCATION INDIA

GMT CA

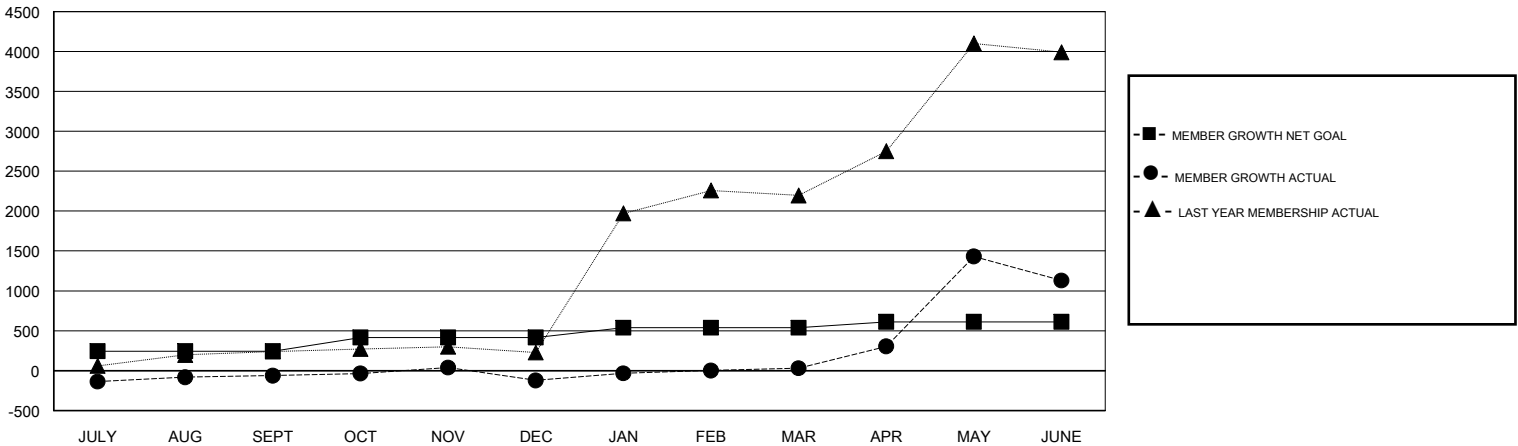
Clubs			
RESULTS FOR 2018-2019			
QUARTER	NEW CLUB GOAL	NEW CLUBS	DROPPED CLUBS
JULY/AUG/SEPT	2	7	0
OCT/NOV/DEC	1	3	3
JAN/FEB/MAR	1	1	1
APR/MAY/JUNE	1	3	2

Members			
RESULTS FOR 2018-2019			
QUARTER	MEMBER GROWTH NET GOAL	MEMBER GROWTH ACTUAL	DROPPED MEMBERS ACTUAL (including transfers)
JULY/AUG/SEPT	245	472	303
OCT/NOV/DEC	172	159	216
JAN/FEB/MAR	122	236	78
APR/MAY/JUNE	74	1,682	576

GOALS AND ACTUAL NEW CLUBS CUMULATIVE



GOALS AND ACTUAL MEMBERS CUMULATIVE



DROPPED CLUBS: 6	102 CLUBS OF 179 ADDED 1 OR MORE NEW MEMBERS	<u>GENDER DISTRIBUTION</u> MALE 9,744 (73.22%) FEMALE 3,563 (26.78%) Women Percentage Fiscal Year Goal: 10%
<u>DROPPED MEMBERS</u> DECEASED 23 CLUB CANCELLED 113 OTHER 1,037 TOTAL 1,173	<a href="#">CLICK HERE FOR CUMULATIVE MEMBERSHIP DATA</a>	TOTAL FAMILY UNIT MEMBERS 6,539 FAMILY MEMBERS PAYING HALF DUES 4,345